

Output Transformer				Push Pull (with SG tap)							
MODEL	Output (W)	Impedance		Frequency Response (± 1dB)	Insertion Loss	Maximum DC Current		Primary Inductance		Size Weight (Kg)	Applications
		Primary	Secondary			Balance	Un balance	Balance	Un balance		
HW-100-5	100 30Hz	5kΩ	4, 8, 16Ω	10 ~ 60kHz	0.15dB	150 mA×2	5.5 mA	200H	125H	WE-114 (6.2)	KT-88, EL-34, EL-156 6550A, 6L6GC, 300B
HW-60-5	60 30Hz	5kΩ	4, 8, 16Ω	10 ~ 70kHz	0.2 dB	125 mA×2	4.0 mA	200H	125H	WE-102 (4.1)	KT-88, EL-34, 300B 6550A, 6L6GC
HW-40-10	40 45Hz	10kΩ	4, 8, 16Ω	10 ~ 60kHz	0.2 dB	90 mA×2	2.8 mA	250H	150H	WE-85 (2.4)	6V6, VT-62/801A 6F6, VT-25/10, 42
HW-40-8	40 45Hz	8kΩ	4, 8, 16Ω	10 ~ 60kHz	0.2 dB	100 mA×2	3.5 mA	200H	130H	WE-85 (2.4)	6L6GC, 6BQ5 6F6, 6V6, KT-66
HW-40-5	40 45Hz	5kΩ	4, 8, 16Ω	10 ~ 60kHz	0.2 dB	125 mA×2	4.0 mA	150H	90H	WE-85 (2.4)	EL-34, 2A3, 6A3, 45 6L6GC, 6B4G, VT52
HW-25-8	25 45Hz	8kΩ	4, 8, 16Ω	10 ~ 70kHz	0.3 dB	75 mA×2	3.5 mA	180H	110H	WE-85 (2.4)	6V6, 6BQ5, 71A 6F6, 7189A
HW-25-5	25 45Hz	5kΩ	4, 8, 16Ω	10 ~ 70kHz	0.3 dB	100 mA×2	4.0 mA	130H	80H	WE-85 (2.4)	2A3, 6B4G, VT52 6A3, 6BM8
HW-15-8	15 50Hz	8kΩ	4, 8, 16Ω	15 ~ 50kHz	0.35 dB	60 mA×2	5.0 mA	120H	85H	WE-66 (1.3)	6V6, 6BQ5, 6BX7, 6F6, 6AC5, 6GW8
HW-15-5	15 50Hz	5kΩ	4, 8, 16Ω	15 ~ 50kHz	0.35 dB	75 mA×2	5.0 mA	75H	60H	WE-66 (1.3)	VT52, 2A3, 6BM8 6B4G, 71A, 6L6(T)
New HWC-30-8	30 50Hz	8kΩ	4, 8, 16Ω	10 ~ 50kHz	0.2 dB	80 mA×2	5.0 mA	160H	120H	PL-85B (2.0)	6L6GC, 6BQ5 6F6, 6V6, KT-66
New HWC-30-5	30 50Hz	5kΩ	4, 8, 16Ω	10 ~ 50kHz	0.2 dB	110 mA×2	5.0 mA	100H	80H	PL-85B (2.0)	EL-34, 2A3, 6A3, 45 6L6GC, 6B4G, VT52

●Insulation Resistance : DC500V 100MΩ min ●Dielectric Withstanding : AC1500V,1min

Output Transformer				Single (with SG tap)							※ Without H-20-14U SG tap	
MODEL	Output (W)	Impedance		Frequency Response (± 2dB)	Insertion Loss	Primary inductance / DC Currentt	Maximum DC Current	Size Weight (Kg)	Applications			
		Primary	Secondary									
H-30-5S	30 50Hz	5kΩ	4, 8, 16Ω	25 ~ 70kHz	0.3 dB	25H / 80mA	160 mA	WE-102 (4.1)	PX-25, UX-50 DA-30/PX-25A			
H-30-3.5S	30 50Hz	3.5kΩ	4, 8, 16Ω	25 ~ 80kHz	0.3 dB	20H / 100mA	200 mA	WE-102 (4.1)	300B, PX25 6550A, 6L6GC			
※ H-20-14U	20 50Hz	10kΩ / 14kΩ	4, 8, 16Ω	30 ~ 50kHz	0.3 dB	40H / 50mA(10kΩ) 50H / 45mA(14kΩ)	80 mA	WE-85 (2.4)	6V6, VT-62/801A, 42 6F6, VT-25/10			
H-20-7U	20 50Hz	5kΩ / 7kΩ	4, 8, 16Ω	25 ~ 70kHz	0.3 dB	23H / 70mA(5kΩ) 30H / 60mA(7kΩ)	100 mA	WE-85 (2.4)	6V6, 6L6GC, 6BQ5 6F6, KT-66, VT52, 45			
H-20-3.5U	20 50Hz	2.5kΩ / 3.5kΩ	4, 8, 16Ω	25 ~ 90kHz	0.3 dB	13H / 100mA(2.5kΩ) 18H / 80mA(3.5kΩ)	140 mA	WE-85 (2.4)	300B, EL-34, 2A3 6B4G, 6L6GC, 6A3			
H-507S	7 50Hz	5kΩ / 7kΩ	4, 8, 16Ω	45 ~ 100kHz ± 3dB	0.6 dB	15H / 50mA(5kΩ) 20H / 40mA(7kΩ)	65 mA	WE-66 (1.3)	6V6, 6BQ5, 71A 6F6, 7189A, 6AC5			
H-203S	7 50Hz	2.5kΩ / 3.5kΩ	4, 8, 16Ω	45 ~ 100kHz ± 3dB	0.6 dB	6.5H / 70mA(2.5kΩ) 9H / 60mA(3.5kΩ)	90 mA	WE-66 (1.3)	2A3, 6B4G, 6A3,300B 6L6,EL34,PX4,KT88			
HC-507U	20 50Hz	5kΩ / 7kΩ	4, 8, 16Ω	30 ~ 45kHz	0.6 dB	20H / 70mA(5kΩ) 26H / 60mA(7kΩ)	100 mA	PL-85B (2.0)	6V6, 6L6GC, 6BQ5 6F6, KT-66, VT52, 45			
HC-203U	20 50Hz	2.5kΩ / 3.5kΩ	4, 8, 16Ω	30 ~ 60kHz	0.6 dB	10H / 100mA(2.5kΩ) 13H / 80mA(3.5kΩ)	130 mA	PL-85B (2.0)	300B, EL-34, 2A3 6B4G, 6L6GC, 6A3			

●Insulation Resistance : DC500V 100MΩ min ●Dielectric Withstanding : AC1500V,1min

Interstage Driver Transformer			Single / Push Pull				
MODEL	Primary Impedance	Turns Ratio	Frequency Response (± 2dB)	Primary Impedance	Primary DC Currentt Series / Parallel	Size Weight (Kg)	Applications
A-107	7kΩ	1×2 : 2×2	25 ~ 25kHz	70H-10mA 80H-5mA	10mA / 20mA	WE-60 (0.8)	12AU7, 76 6SN7, 5687
A-105	5kΩ	1×2 : 1×2	25 ~ 40kHz	50H-15mA 60H-7mA	15mA / 30mA	WE-60 (0.8)	5687, 6AH4GT 6S4A, 6BQ5(T)

●Insulation Resistance : DC500V 100MΩ min ●Dielectric Withstanding : AC1500V,1min

Line Output Transformer			Single / Push Pull					
MODEL	Impedance		Frequency Response (- 2dB)	Insertion Loss	Rated DC Current	Maximum DC Current	Size Weight (Kg)	
	Primary	Secondary						
HL-20K-6	20KΩ	600Ω/150Ω	Split	25 ~ 45kHz	0.7 dB	15mA	30mA	WE-60 (0.8)
HL-10K-6	10KΩ	600Ω/150Ω	Split	20 ~ 45kHz	0.7 dB	15mA	35mA	WE-60 (0.8)

●Insulation Resistance : DC500V 100MΩ min ●Dielectric Withstanding : AC1500V,1min

MC Stepup Transformer		For MC Phono Pickup Cartridge			
MODEL	Primary Impedance	Secondary Load Impedance		Stepup Rate/Gain	Size Weight (Kg)
		Rated Load Impedance	Recommendation Rated Load Impedance		
HM-3	Primary Series Connection 12 (7 ~ 40)	4.7KΩ	47KΩ	20Times / 26dB	WE-60L (0.5)
	Primary Parallel Connection 3 (2 ~ 7)	4.7KΩ	47KΩ	40Times / 32dB	

●Insulation Resistance : DC250V 100MΩ min ●Dielectric Withstanding : AC250V,1min

Power Transformer		(Equipped with Static Shield, magnetic Shield)			
MODEL	Specifications			Size Weight (Kg)	Applications
	Primary	Secondary			
PT-400B	100V	20V-0-280V-320V-360V-720mA AC (450mA DC; Bridge rectifier) 75V-0-75V-0.15A, 6.3V-4A(×2), 6.3V-2A(×2)		WE-114 (8.1)	KT88, EL34, EL156
PT-300B	100V	20V-0-280V-310V-350V-530mA AC (330mA DC; Bridge rectifier) 0-70V-0.12A, 6.3V-3.5A(×2), 6.3V-2A(×2)		PB-114 (5.9)	KT88, KT66, EL34, 6L6GC
PT-270	100V	320V-280V-0-60V-280V-320V-275mA AC (390mA DC; Full-wave rectifier) 0-2.5V-6.3V-5A(×2), 6.3V-2.5A, 5V-3A		PB-114 (5.8)	KT88, KT66, VT52, 6L6GC, EL34/6CA7 6550A, 6B4G, 12E1, 2A3, 6L6G/CV1947
PT-260	100V	480V-420V-240V-0-240V-420V-480V-170mA AC 0-6.3-7.5V-5A(×2), 6.3V-3A, 5V-3A Vacuum tube ①choke input 250mA Rectifier ②capacitor input 170mA		PB-114 (5.7)	①Single(stereo), Push pull(monoral) VT52, 6B4G, 6A3, KT66, 350B ②Single(stereo), Push pull(monoral) VT25, VT62, 50, 6L6GC, EL34
PT-250	100V	500V-380V-240V-0-240V-380V-500V-150mA AC (200mA DC; 7.5V-4.5A(×2), 6.3V-3A, 5V-3A Full-wave rectifier)		PB-114 (5.7)	10, VT25, VT25A, 801A, VT62, 50
PT-240	100V	480V-420V-240V-0-240V-420V-480V-170mA AC 0-2.5-5V-5.5A(×2), 6.3V-3A, 5V-3A Vacuum tube ①choke input 250mA Rectifier ②capacitor input 170mA		PB-114 (5.7)	①Single(stereo), Push pull(monoral) 2A3, 300B, 45, PX4, PX25 ②Single(stereo), Push pull(monoral) PX25A, DA30, 300B
PT-220	100V	380V-320V-0-100V-320V-380V-200mA AC (280mA DC; 0-4V-5V-3A(×2), 0-6.3V-10V-2.5A, 5V-3A Full-wave rectifier)		PB-114 (5.2)	300B, PX25, PX4,
PT-180	100V	280V-250V-0-60V-250V-280V-220mA AC (300mA DC; 6.3V-2.5A(×3), 5V-3A Full-wave rectifier)		PB-102 (4.3)	6V6, 6F6, 6L6GC, 6BM8, 6B4G 6BQ5, 7189A, R120, 42
PT-160	100V	320V-280V-0-280V-320V-140mA AC (190mA DC; 0-2.5V-6.3V-3A(×2), 6.3V-2.5A, 5V-3A Full-wave rectifier)		PB-102 (3.9)	2A3, 6A3, PX4, VT52, E406N, 6AC5, 6B4G, KT66, 6BQ5, 6F6, 6V6, 6BM8, 71A, 42, 45, 46
PT-150	100V	280V-250V-220V-0-220V-250V-280V-160mA AC (220mA DC; 0-6.3V-2A(×3), 5V-3A Full-wave rectifier)		PB-102 (3.9)	6V6, 6F6, 6BM8, 6AC5, 42, 71A, 7189A 6BQ5, 6GW8, KT88, KT66, 6550A, EL34, VT52, 6B4G, 6L6GC, 12E1
PT-100	100V	280V-250V-0-250V-280V-100mA AC (140mA DC; 0-5V-6.3V-2A(×2), 0-6.3V-2A, 5V-2A Full-wave rectifier)		PB-95 (2.8)	6F6, 6BQ5, 6AC5, (For Stereo Preamplifier) 6BM8, 71A, 6V6, 42
New PT-95	100V	230V-200V-0-200V-230V-120mA AC (170mA DC; 0-5V-6.3V-2A(×2), 0-6.3V-2A, 5V-2A Full-wave rectifier)		PB-95 (2.8)	WE101D, WE104D (For Stereo Preamplifier) WE311A, WE349A, 6BM8, 71A, 6K6GT, 41
PT-60	100V	260V-0-260V-35mA AC (50mA DC; Full-wave rectifier) 0-15V-2A, 6.3V-1A		PB-78 (1.7)	For Stereo Preamplifier

Power transformers with American or European primary voltage are available upon request. please contact our authorized international dealers.

●Insulation Resistance : DC500V 100MΩ min ●Dielectric Withstanding : AC1500V,1min

Choke Coil		(Equipped with magnetic Shield)			
MODEL	Specifications				Size Weight (Kg)
	Inductance	Rated DC Current	max. DC Current	DC resistance	
C-60-50W	60H/15H	50mA/100mA	60mA/120mA	840/210 Ω	WE-66 (1.3)
C-16-150W	16H/4H	150mA/300mA	180mA/360mA	200/50 Ω	WE-85 (3.0)
C-10-200W	10H/2.5H	200mA/400mA	250mA/500mA	140/35 Ω	WE-85 (3.0)
C-10-130W	10H/2.5H	130mA/260mA	150mA/300mA	160/40 Ω	WE-66 (1.3)
C-30-80W	30H/7.5H	80mA/160mA	90mA/180mA	440/110 Ω	WE-66 (1.3)
C-6-250W	6H/1.5H	250mA/500mA	280mA/560mA	88/22 Ω	WE-85 (3.0)
C-30-40	30H	40mA	50mA	460 Ω	CB-60 (0.7)
C-1-400	1H	400mA	450mA	18 Ω	CB-68 (0.85)
☆ C-50-30	50H	30mA	40mA	1500 Ω	WE-60 (0.85)
CC-10-200W	10H/2.5H	200mA/400mA	230mA/450mA	150/37Ω	PH-78 (1.8)

☆ : Make to order, without rating plate

●Insulation Resistance : DC500V 100MΩ min ●Dielectric Withstanding : AC1500V,1min

Choke Coil (Choke input Circuit)		(Equipped with magnetic Shield)				
MODEL	Specifications					Size Weight (Kg)
	Inductance and DC Current	max. DC Current	DC resistance	max. AC input voltage	min. operating Current	
C-25-150CH	25H-150mA	200mA	205 Ω	700V MAX	30mA MIN	WE-85 (2.4)
C-15-200CH	15H-200mA	240mA	130 Ω	600V MAX	40mA MIN	WE-85 (2.4)

●Insulation Resistance : DC500V 100MΩ min ●Dielectric Withstanding : AC2.0KV,1min

Information in this document is subject to change without notice



HASHIMOTO ELECTRIC CO., LTD.

Tateishi 2-17-11, Katushika-ku, Tokyo 124-0012, Japan

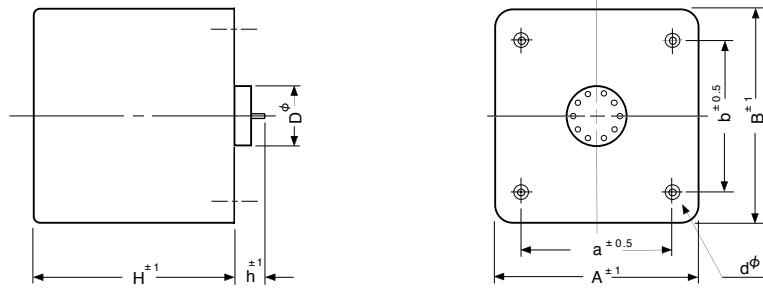
Tel. 81-3-3691-4173 Fax. 81-3-3691-9416

http://www.hashimoto-trans.co.jp

<November, 2006>

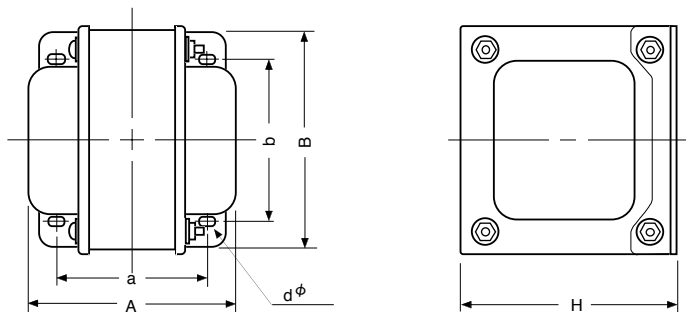
Dimensions

WE Type



Model	Style	Dimensions(mm)										
		A	B	a	b	C	D	H	h	d ϕ	D ϕ	Weight (Kg)
HW-100-5	WE-114	124	136	80	80	—	—	120	15	M4	29	6.2
HW-60-5	WE-102	100	110	80	80	—	—	120	15	M4	29	4.1
HW-40-10	WE-85	80	88	55	60	—	—	110	15	M4	29	2.4
HW-40-8	WE-85	80	88	55	60	—	—	110	15	M4	29	2.4
HW-40-5	WE-85	80	88	55	60	—	—	110	15	M4	29	2.4
HW-25-8	WE-85	80	88	55	60	—	—	110	15	M4	29	2.4
HW-25-5	WE-85	80	88	55	60	—	—	110	15	M4	29	2.4
HW-15-8	WE-66	66	66	40	40	—	—	85	15	M3	29	1.3
HW-15-5	WE-66	66	66	40	40	—	—	85	15	M3	29	1.3
H-30-5S	WE-102	100	110	80	80	—	—	120	15	M4	29	4.1
H-30-3.5S	WE-102	100	110	80	80	—	—	120	15	M4	29	4.1
H-20-14U	WE-85	80	88	55	60	—	—	110	15	M4	29	2.4
H-20-7U	WE-85	80	88	55	60	—	—	110	15	M4	29	2.4
H-20-3.5U	WE-85	80	88	55	60	—	—	110	15	M4	29	2.4
H-507S	WE-66	66	66	40	40	—	—	85	15	M3	29	1.3
H-203S	WE-66	66	66	40	40	—	—	85	15	M3	29	1.3
A-107	WE-60	58	52	40	40	—	—	85	15	M3	29	0.8
A-105	WE-60	58	52	40	40	—	—	85	15	M3	29	0.8
HL-20K-6	WE-60	58	52	40	40	—	—	85	15	M3	29	0.8
HL-10K-6	WE-60	58	52	40	40	—	—	85	15	M3	29	0.8
HM-3	WE-60L	58	52	40	40	—	—	55	15	M3	29	0.5
C-16-150W	WE-85	80	88	55	60	—	—	110	15	M4	29	3.0
C-10-200W	WE-85	80	88	55	60	—	—	110	15	M4	29	3.0
C-6-250W	WE-85	80	88	55	60	—	—	110	15	M4	29	3.0
C-25-150CH	WE-85	80	88	55	60	—	—	110	15	M4	29	2.4
C-15-200CH	WE-85	80	88	55	60	—	—	110	15	M4	29	2.4
C-60-50W	WE-66	66	66	40	40	—	—	85	15	M3	29	1.3
C-30-80W	WE-66	66	66	40	40	—	—	85	15	M3	29	1.3
C-10-130W	WE-66	66	66	40	40	—	—	85	15	M3	29	1.3
C-50-30	WE-60	58	52	40	40	—	—	85	15	M3	29	0.85

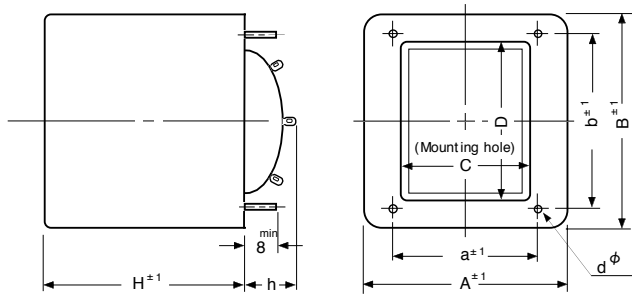
PH / PL Type



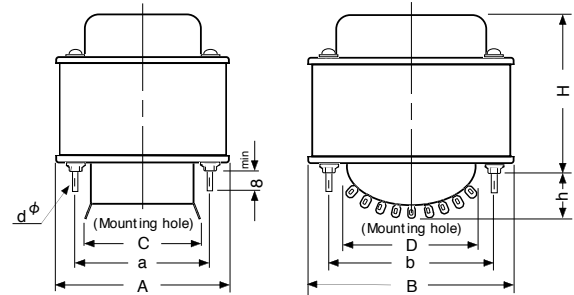
Model	Style	Dimensions(mm)										
		A	B	a	b	C	D	H	h	d ϕ	Weight (Kg)	
HC -507U	PL - 85B	90	90	65	74	—	—	83	—	4.5X7.5	2.0	
HC -203U	PL - 85B	90	90	65	74	—	—	83	—	4.5X7.5	2.0	
HWC-30-8	PL - 85B	90	90	65	74	—	—	83	—	4.5X7.5	2.0	
HWC-30-5	PL - 85B	90	90	65	74	—	—	83	—	4.5X7.5	2.0	
CC-10-200W	PH -78	86	70	65	52	—	—	83	—	4.5X7	1.8	

Dimensions

WEPT Type

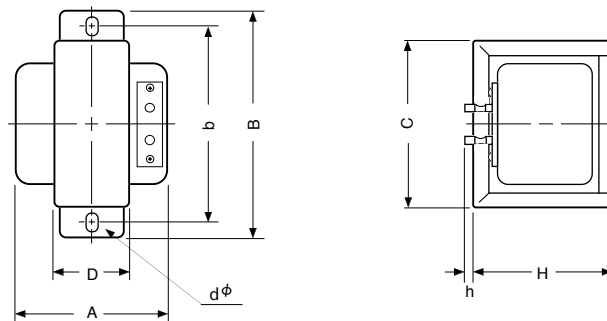


PB Type



Model	Style	Dimensions(mm)									
		A	B	a	b	C	D	H	h	d ϕ	Weight (Kg)
PT-400B	WEPT-114	124	136	76	95	65	83	120	25	M 4	8.1
PT-300B	PB-114	100	120	76	95	65	83	110	32	M 4	5.9
PT-270	PB-114	100	120	76	95	65	83	110	32	M 4	5.8
PT-260	PB-114	100	120	76	95	65	83	110	32	M 4	5.7
PT-250	PB-114	100	120	76	95	65	83	110	32	M 4	5.7
PT-240	PB-114	100	120	76	95	65	83	110	32	M 4	5.7
PT-220	PB-114	100	120	76	95	65	83	110	32	M 4	5.2
PT-180	PB-102	93	107	70	87	60	81	95	32	M 4	4.3
PT-160	PB-102	93	107	70	87	60	81	85	32	M 4	3.9
PT-150	PB-102	93	107	70	87	60	81	85	32	M 4	3.9
PT-100	PB-95	86	100	65	80	56	71	73	32	M 4	2.8
PT-95	PB-95	86	100	65	80	56	71	73	32	M 4	2.8
PT-60	PB-78	70	83	54	66	48	57	69	28	M 4	1.7

CB Type



Model	Style	Dimensions(mm)									
		A	B	a	b	C	D	H	h	d ϕ	Weight (Kg)
C -1 -400	CB - 66	63	90	—	80	71	32	60	3	4.5X6.5	0.85
C -30 -40	CB - 60	62	86	—	75	62	33	54	3	4.5X6.5	0.7